

An aerial photograph of a city, likely Lisbon, featuring a large, circular stadium with a green roof and a blue interior. The stadium is surrounded by a dense urban landscape with red-tiled roofs and green spaces. A major highway interchange with multiple overpasses is visible in the foreground, curving around the stadium. The text "Section 1 & Antas" is overlaid in large, white, sans-serif font across the center of the image.

Section 1 & Antas

Group 2

Kjell, Bryan, Evy, João, Nickay & Bayley

Introduction Overview

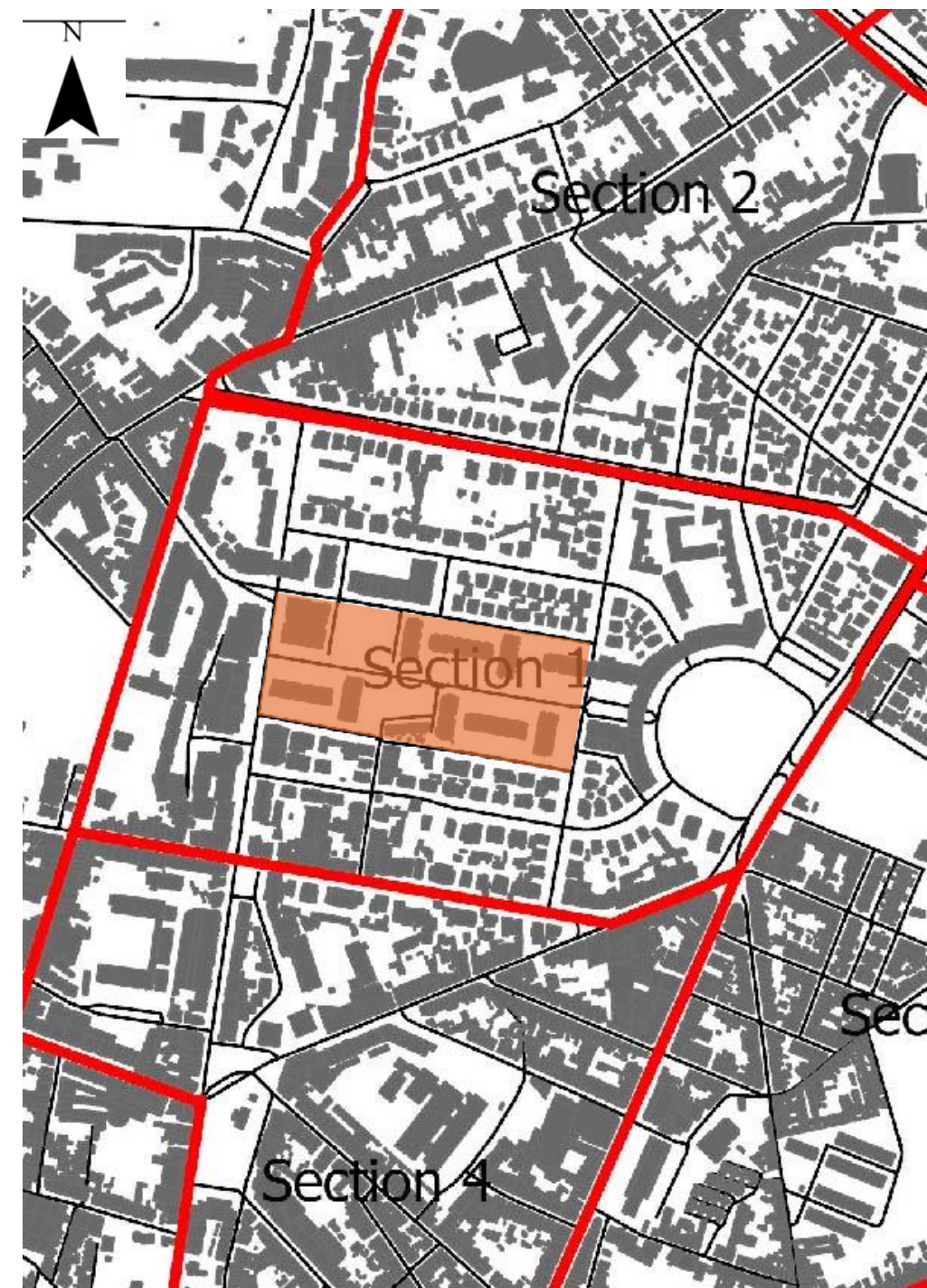
- The Area
- Stages of Analysis
 - Stage 1
 - Macro-scale spatial analyses
 - Stage 2
 - VGA Measures
 - Stage 3
 - Micro-scale spatial analyses
 - Stage 4
 - Socio-spatial & visual analysis
 - Stage 5
 - Recommendations



Specific Area Analysis

Alameda de Eça de Queirós

- Overview:
 - Large centrally located pedestrianised avenue
 - Surrounded by mixed-use apartment buildings
 - Lined with green space



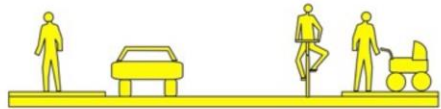
Specific Area Analysis

Alameda de Eça de Queirós

- Suggested Improvements:
 - Create a stronger link from buildings, to green space than to the street
 - Create more useable green space
 - Try and bring people out from their homes into the street



Pedestrian and bicycle streets



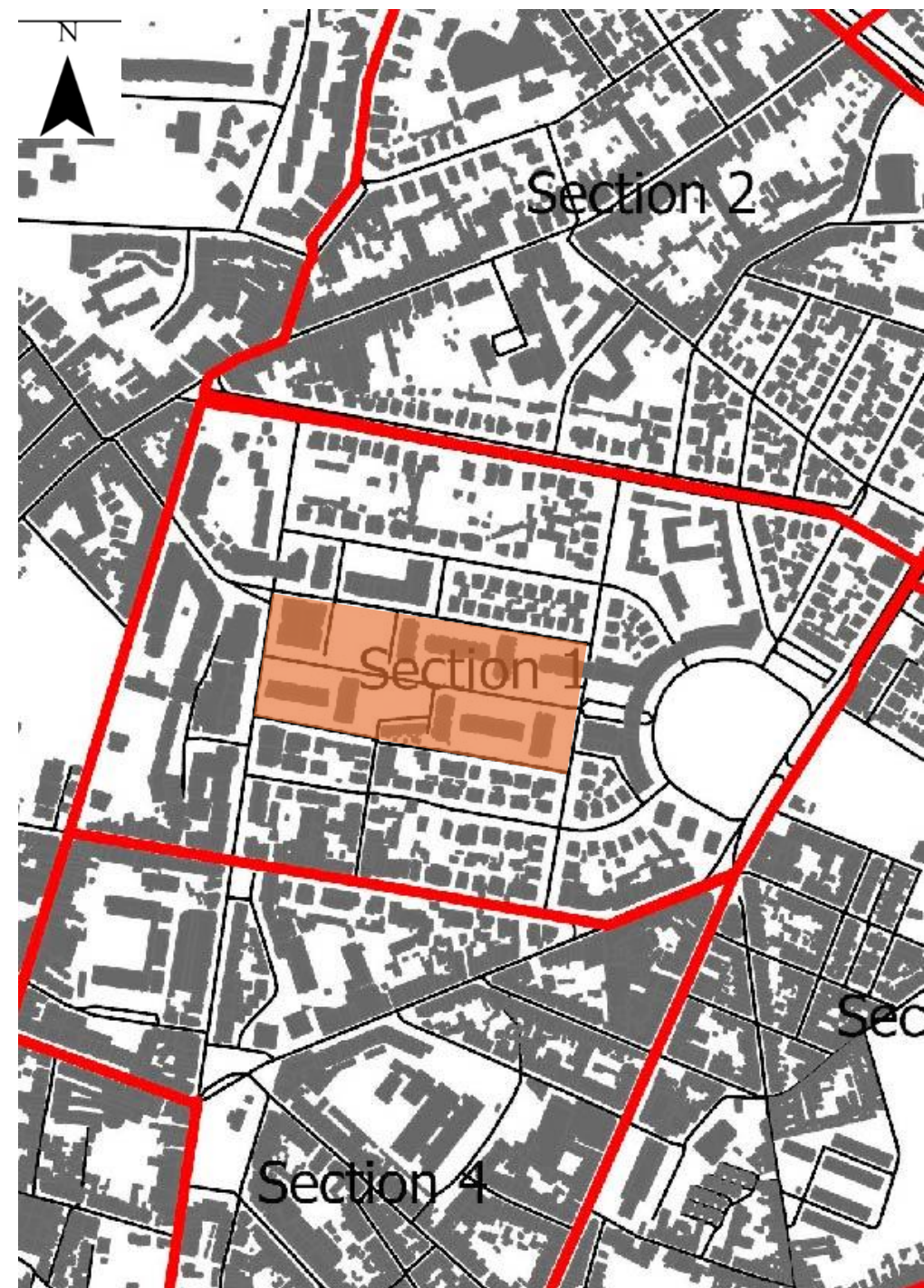
Balanced streets



Vehicle dominated roads/streets



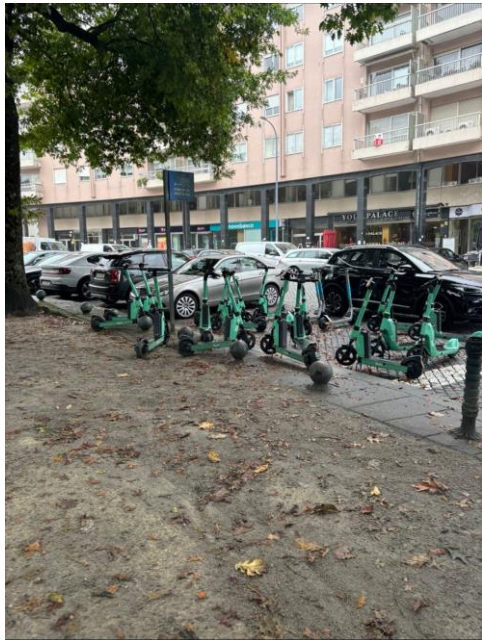
Vehicle only roads



Specific Area Analysis

Praça do Dr. Francisco Sá Carneiro

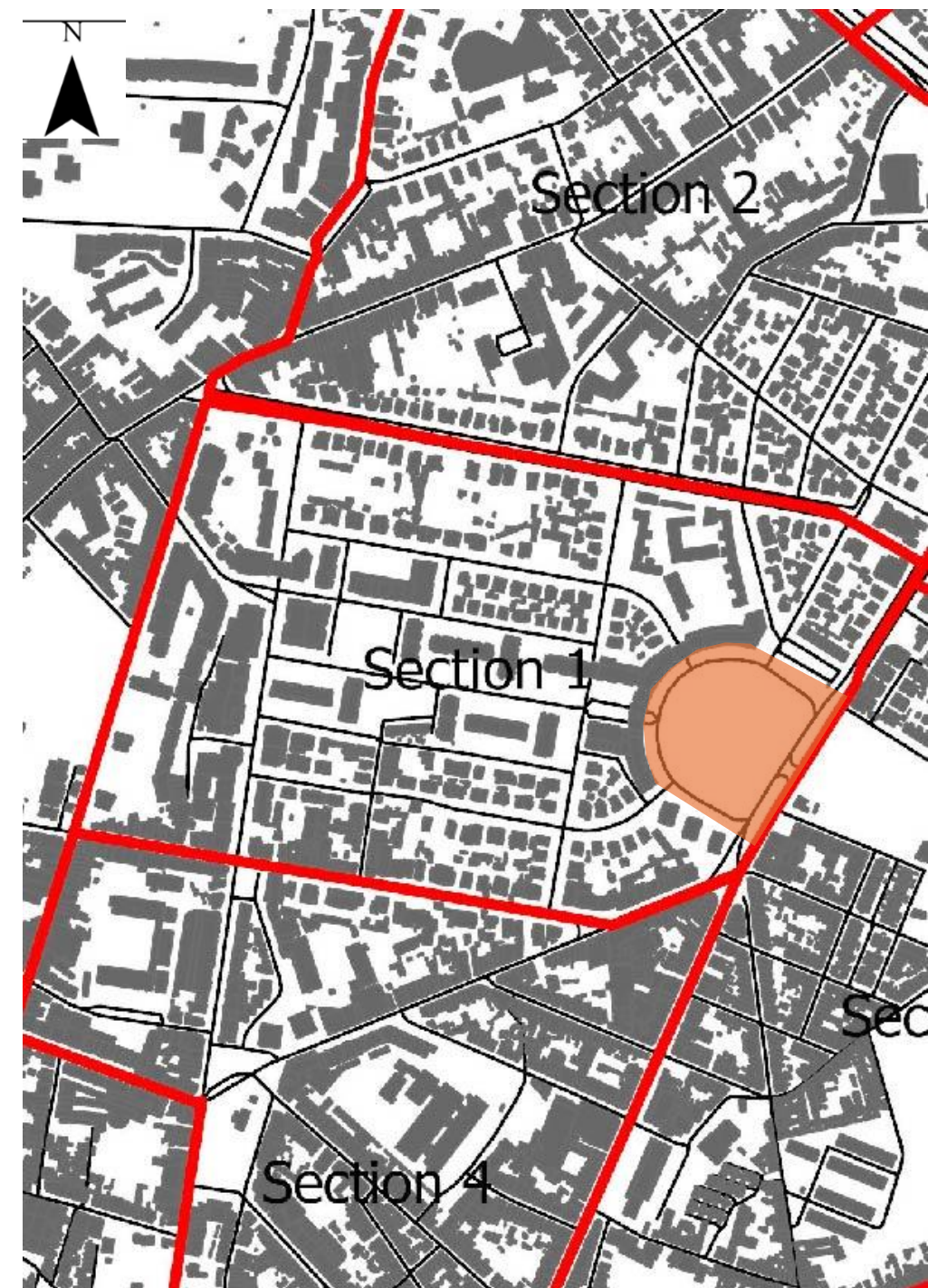
- Overview:
 - Large park with green spaces
 - Little functions
 - Surrounded by mixed-use buildings
 - Appears neglected



Specific Area Analysis

Praça do Dr. Francisco Sá Carneiro

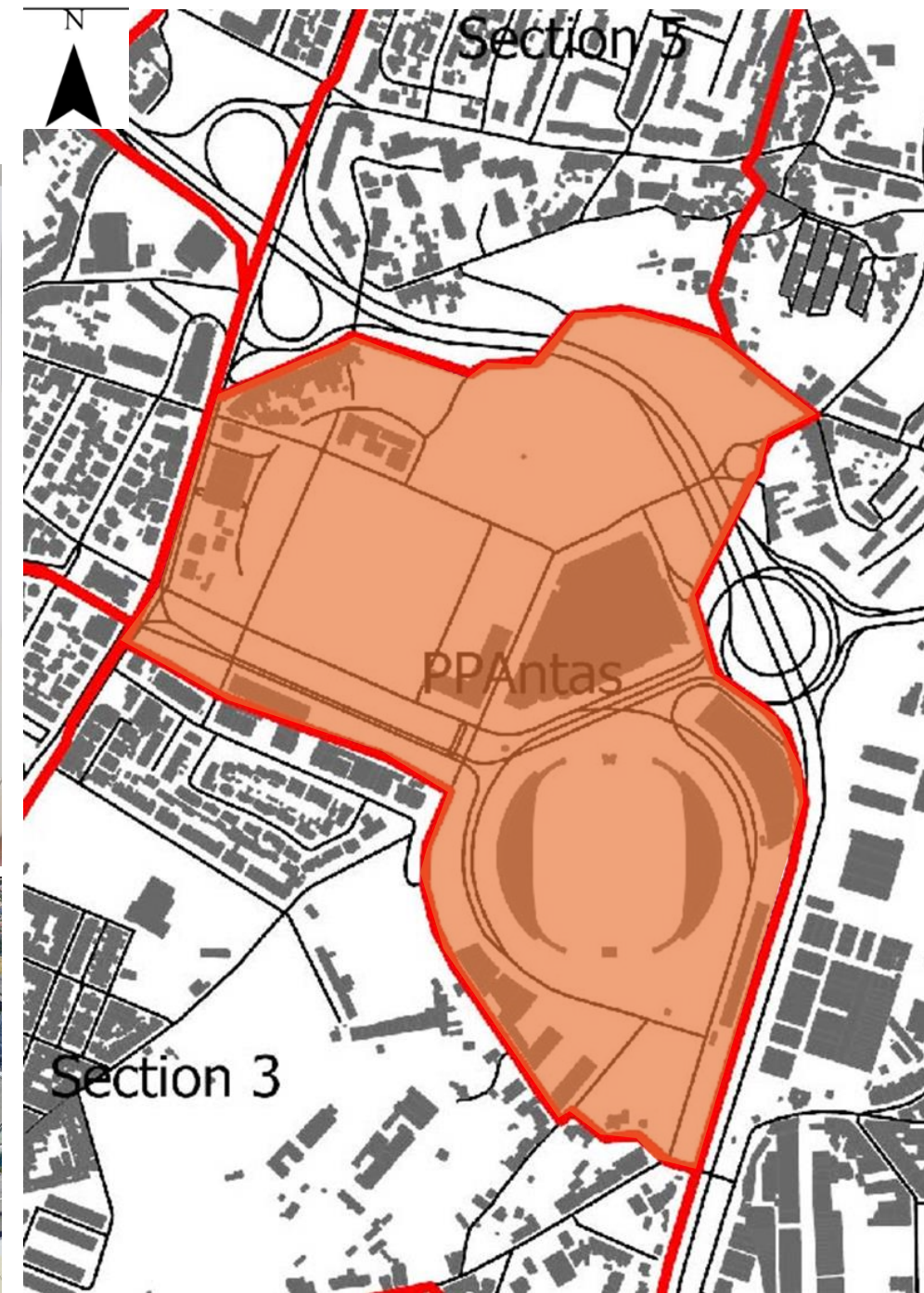
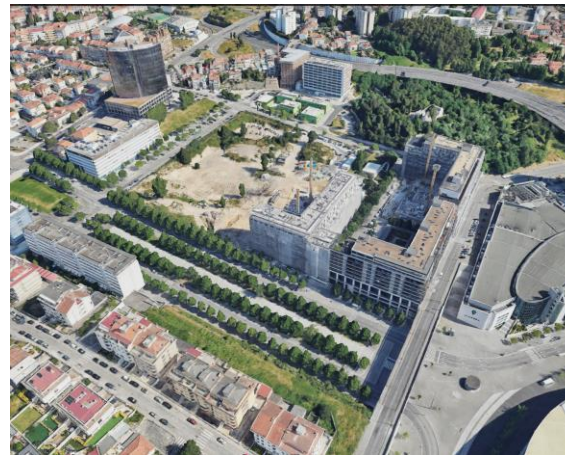
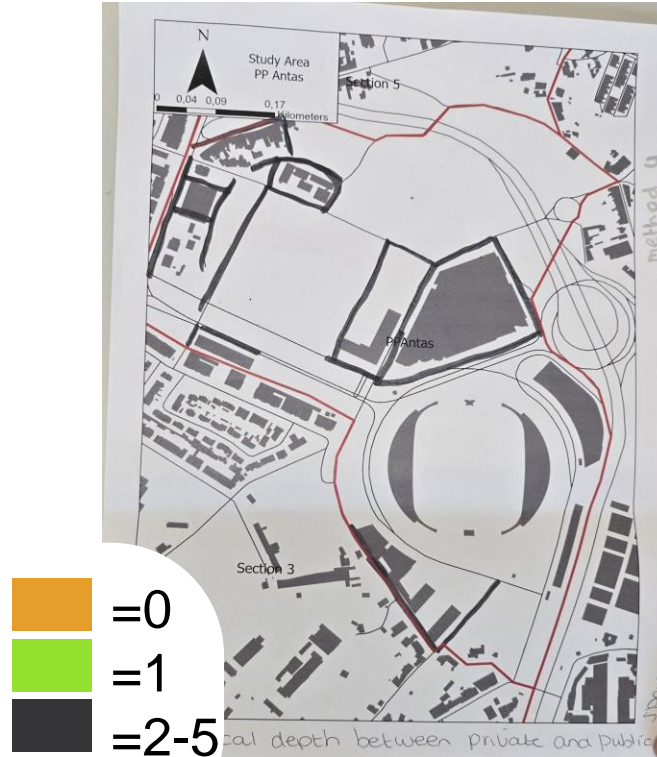
- Broken Window Theory
 - This could lead to further deterioration and antisocial behaviour
- Suggested improvements
 - Maintenance and decoration
 - New functions
 - Better lighting
 - Collaboration with restaurants and local resident



Specific Area Analysis

Antas

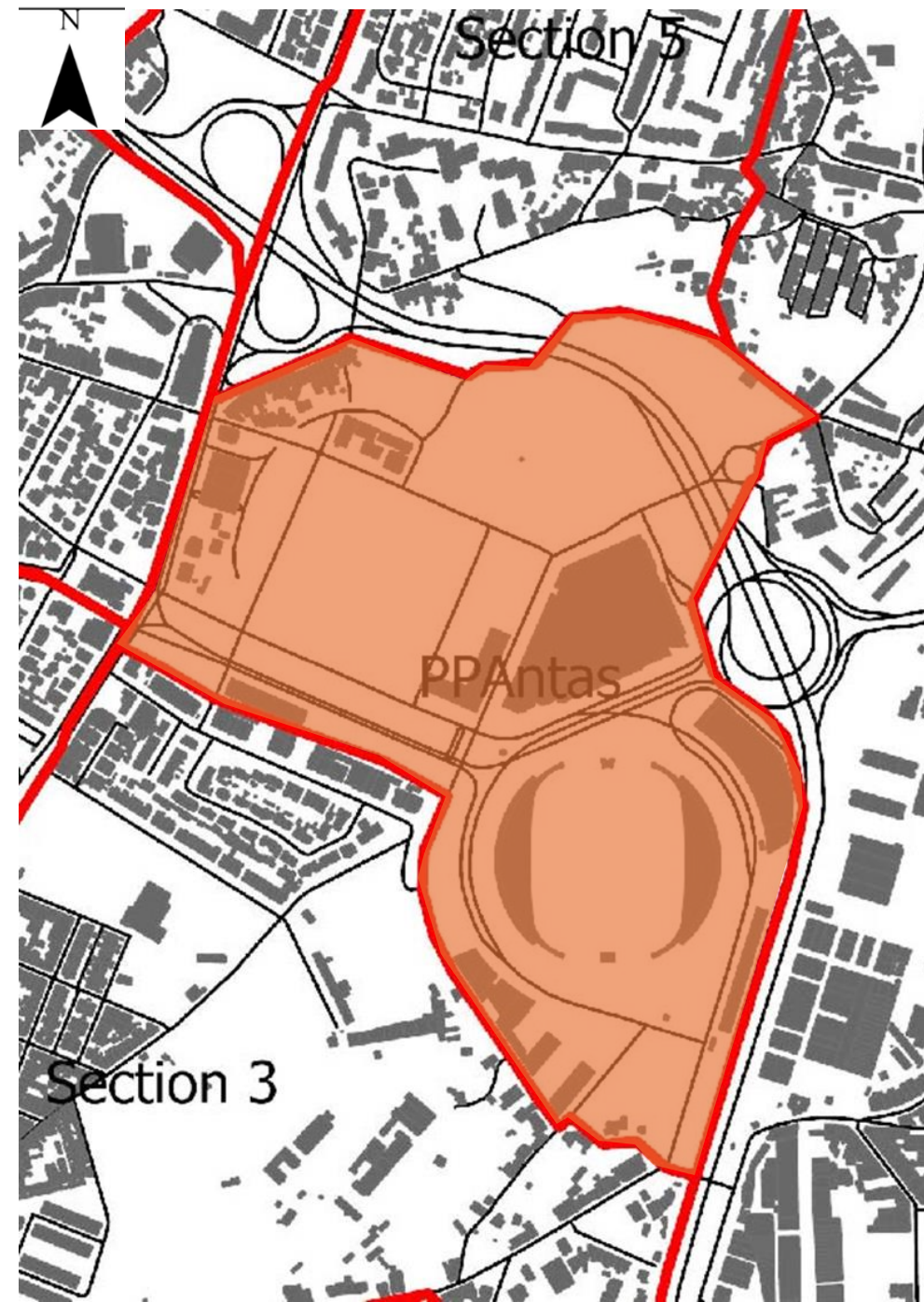
- Overview
 - The area is under development
 - People use the area to access the stadium and shopping mall
 - No proper, useable public realm
 - Designed around vehicles than people



Specific Area Analysis

Antas

- Suggested Improvements
 - CPTED
 - Increase the amount of mix-used facing and interacting with the street
 - More active transport-friendly streets
 - Increase the amount of useable and inviting public realm
 - As the area is still under development this has the most potential for redevelopment and restructuring



Conclusion

Section 1 & Antas

- Overall, some areas have some positives
- Many areas have opportunities for improvement
 - Areas need to be more attractive, make it a destination, not an area for people to pass through



An aerial photograph of a city, likely Rio de Janeiro, featuring a large, circular stadium with a blue and white roof in the center. The stadium is surrounded by a dense urban landscape with numerous buildings, roads, and green spaces. A complex highway interchange is visible in the foreground, and a river or body of water is seen in the distance.

Thank you!

Group 2

Kjell, Bryan, Evy, João, Nickay & Bayley

